

モザイク会議

Mosaic Art Association
in Japan

&



mosaic society of philadelphia

Mosaic Society
of Philadelphia

Mini Mosaic Exchange International 2021

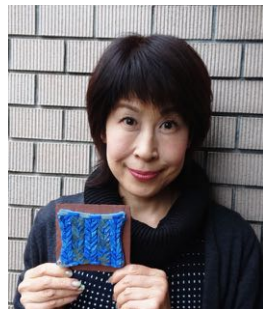
Haruko Matsumoto 松本 治子



Tiger

“Junishi ”is Chinese zodiac. There are 12 animals, with one animal allocated to every year. Next year, 2022, is the year of the tiger. 寅 is tiger.

Thank-you, Carol. I am glad to build a friendly relationship.
☆Connecting the world with mosaics☆



Carol Stirton-Broad



Swatch

My piece about winter grew out of my realization that the first cold day is the beginning of the knitting season for me. I usually begin a new piece with a small swatch of a new yarn and so I decided to make a mosaic swatch as a symbol of new beginnings and the winter season.



I love the creative use of color and material in the Tiger. The beautiful andamento and organic shape of the piece, as well as the calligraphy, all made the piece even more distinctive.

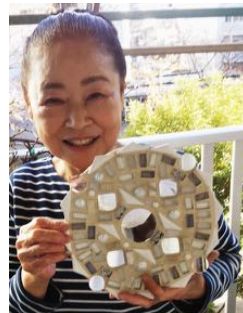
Sachiko Myokawa 妙川 幸子



Mt. Iwaki in Winter

It is a beautiful mountain in my hometown.

I got my very first gift from
a mosaic artist in NJ, USA!!



James Schlichting



Snowflake Winter

Every snowflake is different.

Receiving your mosaic was
awesome. The packing, the
card, the note, nice thanks.



Aya Kinoshita 木下 綾

First Dream of the Year

As New Year is very important in Japan, the dream you have at the beginning of the year means a lot. Mt. Fuji is the best thing to dream of. The shape is a small version of decorative racket called Hogoita.



I watch this cardinal as if I am in the snow just like you've been doing in the winters in NJ!



Beth Jablow



The Northern Cardinal

Growing up in New Jersey, spotting Cardinals happened quite often. It always seems to happen more in the winter. The bold red is easy to see against the winter landscape. Whenever I see this beautiful bird, it stops me in my tracks. I stop to observe the Cardinal until it flies out of sight.

I love to hear personal stories and connections to different objects. The items I've inherited are special because I feel a connection to the original owner. Thank you Aya for sharing this story, a memory of your childhood along with a tradition of your country.





A Ballerina in Winter

Like a fairy with dance.



A Christmas Tree in Winter's Wonderland

Winter in the USA brings an abundance of snow in states such as Alaska, Colorado, Michigan, Minnesota, etc. and with its arrival come elaborately decorated Christmas trees - both indoors and outdoors. My mini mosaic represents a decorated outdoor Christmas tree, the background represents the snow and the red and green flowers at the base of the tree are poinsettias which can be found inside many homes and business offices during the winter even if there isn't any winter snow.



The photo does not do this piece justice but I love the way it is so beautifully and delicately made. My mosaic instructor, Ms. Carol Stirton-Broad, showed it to the entire mosaic art class and they were very impressed with the artist's workmanship.

Ikuko Oda 小田 いくこ



Spring-coming Soon

Japan is gathering of several islands from North to South. The north area is snowy and so cold in winter. People wait for spring and also birds that pass the winter in Japan.

It is so lovely. I can see how the snow is lightly covering the covered bridge which reminds me of Tasha Tudor.



Donna Mitchelson



A Covered Bridge in Vermont, USA

This mosaic is about my hiking trips in Vermont. Vermont is one of the six New England States, is known as the Green Mountain state and the home of covered bridges. Winter hiking in Vermont can be both fun and challenging..



It's lovely and I have it hanging proudly in my living room./ It is a lovely piece that hangs in my living room near my drafting table and is very inspiring.

Yoshie Fukuhara 福原 よしえ



Kagami Mochi

Kagami mochi is new year's offering made from two rice cakes.

Susan's house shaped mosaic is cute. I feel close to New Jersey.



Susan Adler



Winter in America

Here in the northeastern part of the United States, winter in America means that we have to enjoy our flowers inside the house, and be patient until springtime when we can get back to our outside gardens.

Receiving your mosaic was awesome. The packing, the card, the note, nice thanks.



Mari Hamada 濱田 麻里



Tsubaki
—Camellia

This is a camellia I enjoy watching when I take a walk in the park just near my house these days. Camellia is one of very typical flowers which many Japanese people enjoy seeing during winter. I depicted a camellia with a bee and snow.

I LOVE Sharon's mosaic depicting so serene and peaceful snow fall scenery. It's so beautiful. I imagine the story this winter scene mosaic tells every time I look at it. I will cherish this mosaic for all time. I hope I can see you in person some day, Sharon!



Sharon Ritz



Peace

Winter in the US is different in different areas and for different people. For me, it is a time of peace, when everything seems to rest. I tried to depict this in my little mosaic, showing what I would love to see through a window in the winter. Stained glass, Colorfusion glitter tile, glass frit.



I love my beautiful gift from Mari! Tsubaki (Camellia) has the sparkle of winter frost and the little bee is so precious! I love bees! And I love making a new friend!

Toyoharu Kii 喜井 豊治



Kamakura

In the snowy region, people used to make "Kamakura" and played inside, having tea and sweets. To make "Kamakura" pile up snow to make a mountain and then open a room in it. The room in "Kamakura" is warm and cozy being cut off from cold outside.

The work delivers the coldness and fresh feeling of a winter river. It is fun to make friends like this.



Patricia Buchanan



We'll Be Sledding Tomorrow

I wanted to represent the cold, crystalline snowy night lit up by a full moon. When I was a kid we would be very excited about getting off from school after a big snowstorm and going sledding.

From Toyoharu Kii and his beautiful piece I learned about "Kamakura"; In Japan a carved out snow mound with a lit room inside for having tea and sweets. He sent a photograph of a Kamakura and it just glows; so does this mosaic!



Atsuo Suzumura 鈴木 敦夫



Suzanne Daub



Winter of Love

Blue Water

Japan is a country with beautiful water. Especially in winter, the water turns into snow and ice, and a very beautiful phenomenon can be seen. With the image of winter water in Japan, I made a blue glaze by mixing several kinds of minerals. Marble represents ice crystals.



This photograph of Love Park, after a freshly fallen snow in Philadelphia, Pennsylvania, fills me with peace. The glass tile overlay reveals the true sparkle of the moment.

Atsuo sent this magnificent apple. Holding it in my hands makes me so happy. Thank you Aya for making this exchange happen, I feel like I have a new friend in Atsuo!

Masaaki Nakano なかの 雅章



Bluebird in the Winter Sky

A bluebird is flying through a field of sparkling snow. This work represents my prayer to see the end of the COVID situation and the beginning of a joyful future soon.

Thank you, Carol! I will display it in my studio to enjoy it.



Carol Rydel



Dressed to Walk the Dog

This is how I dress in Winter to walk the dog because it gets cold here.

I am so lucky to receive Masaaki's exquisite micro mosaic. I will treasure its beauty forever.



Natsumi Iino 飯野 夏実



Winter

My mosaic represents an image inviting someone out in the cold to come inside my warm house.

This sparkles beautifully reflecting the light from the window.



Lucinda Weller



Snowflake Splendor

This is my first time using these beautiful glass bevel pieces. They captured my imagination and this stunning snowflake was born. To me this mosaic represents the Joy and Excitement the first snow fall brings.

It is SO ENCHANTING! I LOVE it so much and am proudly displaying it in my home. This mini mosaic trading with Japan and personal connection with a fellow artist, has been such an ENRICHING experience!



Motoko Yamaguchi 山口 素子



One Day in My Winter Season

When I feel really cold in the winter, it reminds me to set up the KOTATSU which is a table with very short legs and the blanket which covers our legs and feet. On the last day of the year, tangerines are the favorite fruit while sitting at Kotatsu table and watching TV with the family. Preparing for the New Year's Day which is the most important holiday, oval shaped 2-layered rice cake with a tangerine on the top is called NOSHI-MOCHI and displayed at home. SAKAKI green leaves are also used to welcome the coming year.

I am so happy to have Carol's mosaic work. I enjoy the mini-mosaic exchange.



Carol Tinkleman



Falling Snow

This mini mosaic represents the brokenness and decay of winter (broken shards) with the regeneration/reuse into a new piece.



My exchange mosaic came beautifully wrapped in a wooden frame. I am curious about the materials used and how they were cut. It was fascinating to see the flavor of Japan in both the artwork and presentation. Loved this exchange!

Noriko Aizawa 相澤 乃梨子



Camellias in Winter

During my walk in the wintertime, I often find blooming red camellias. The white background represents snow. The beads around the flowers show the freezing coldness.

I enjoyed both times making my mosaic and waiting for one to receive. Thank you🎵



Marcy Rosner



Bare Trees

When I look at this mosaic and think about how much I always dread winter's cold, dark days, I need to be reminded that there is beauty any time of the year. Without the change in seasons I wouldn't appreciate spring flowers and long, warm summer days as much as I do.

I love the different materials used and the bright flower against the very interesting gold and white background.



Toshimi Mori 森 敏美



AMBIVALENCE2111

Key to trust.

Thank you for exchanging
the mosaic.



Kathleena Formica



Winter in the United States

Snowflakes - no two are ever alike.



What fun it was to anticipate
receiving a mosaic from
somebody so far away.

Machiko Sakurai 櫻井 真智子



Fairy of the Snow

This is a 3D work of a bird that looks like a snowball. It's called "Shimaenaga (Long-tailed tit)" and found in Hokkaido, the large northern island.

I was impressed with how the snow on a branch and red berries and the flow of the feathers are skillfully expressed with glass! I feel the crisp cold winter air.



Veronica Kairos



Northern Cardinal

An omen of good luck, a beautiful red bird feasts on icy berries on a winter's day.



I absolutely adore it. It is so sweet and whimsical. The craftsmanship is superb!

Yumie Wakatsuki 若月 弓枝



Snow Monkey

This work represents a snow monkey enjoying hot spring on a snowy day.

The bird footprints are very cute and the frozen pond is beautifully created with transparent materials. Thank you for the lovely piece, Susan!



Susan Starr

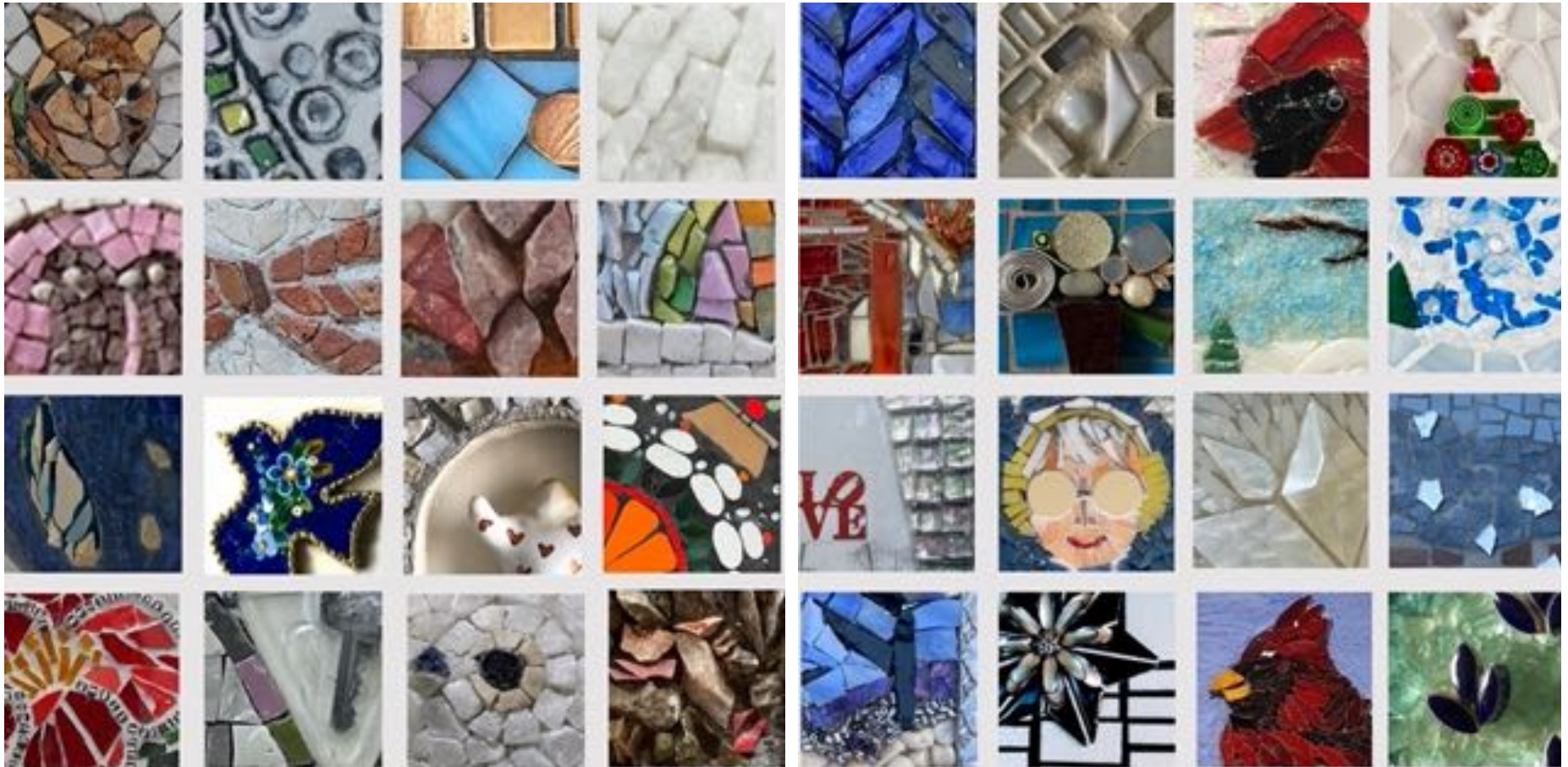


On Frozen Pond

The mini mosaic is a hand made porcelain frame filled with safety glass. It is meant to depict a frozen pond that a bird has walked across. I would like to wish you a happy and peaceful holiday season.

The variation of the stone is fluid and full of movement. In the bottom left corner, a snow monkey peers out from the hot spring. This has been a wonderful exchange. It's so cool to see all the interpretations of winter..





From October to December 2021, all 32 mini mosaics flew over the Pacific Ocean between Japan and the USA. We enjoyed this exchange, and each mosaic became a special gift for this holiday season. Our themes were: “Winter in Japan” and “Winter in the USA.”